



**Colledia Control™**

**SetLana Documentation**

Copyright SBS 2006

**November 21, 2006**

## 1 SetLana

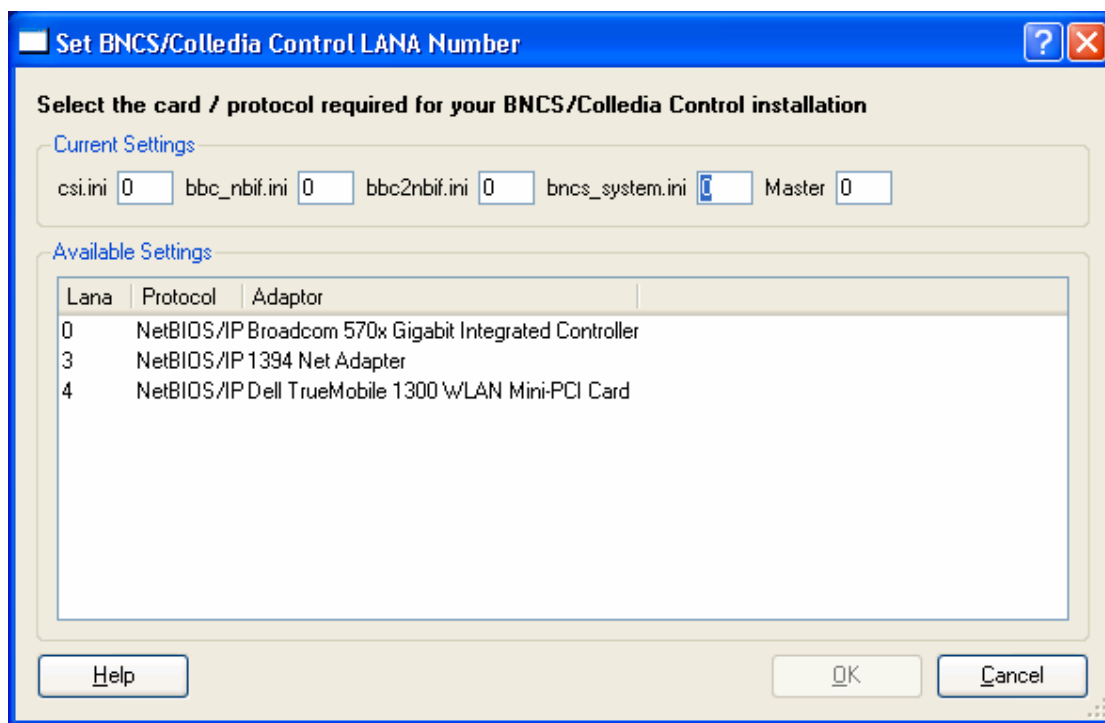
### 1.1 Introduction

SetLana is a utility to allow the user to select which network adapter/protocol binding the Colledia Control™ traffic uses.

### 1.2 Operation

When the application is run it will display a list of available protocols and associated network adapters. Select the correct network for the Colledia Control™ system you wish to use. Selecting OK will save the selected option to all of the possible places that it may be read from.

Note that any application that uses this setting will only read it on start-up so applications will need to be re-started before the changes have any effect.



**Figure 1 SetLana Application**

Figure 1 shows a typical laptop, in this case there are 3 network adapters, each with NetBIOS over IP as the only available protocol.

### 1.3 Dependencies

Earlier versions of this application relied on LanaCfg.exe, which was previously supplied by Microsoft, to actually get the information. The latest version will read the registry to get all the information required.

It is still possible to use lanacfg, by supplying the '/uselanacfg' qualifier when the application is run.

## 2 Version Control

Version	Date	Author	Comments
0.1	7 November 2006	Mark Baldry	
0.2	20 November 2006 14:17	Richard Kerry	Version not dependant upon lanacfg.
0.3	21 November 2006 16:37	Richard Kerry	
0.4			